

March 8-June 8, 2014



Paul Gauguin, French, 1848–1903

Vase Decorated with Breton Scenes, 1886–1887
Glazed stoneware (thrown by Ernest Chaplet) with gold highlights
11 5/16 x 4 3/4" (28.8 x 12 cm)

Royal Museums of Art and History, Brussels



Paul Gauguin, French, 1848–1903

Cup Decorated with the Figure of a Bathing Girl, 1887–1888
Glazed stoneware
11 7/16 x 11 7/16" (29 x 29 cm)

Dame Jillian Sackler



Paul Gauguin, French, 1848–1903

Vase with the Figure of a Girl Bathing Under the Trees, c. 1887–1888
Glazed stoneware with gold highlights
7 1/2 x 5" (19.1 x 12.7 cm)

The Kelton Foundation, Los Angeles

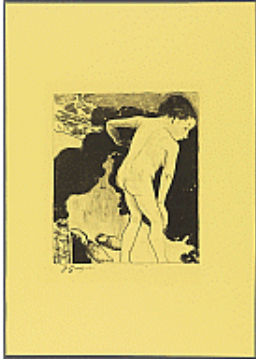


Paul Gauguin, French, 1848–1903

Leda (Design for a China Plate). Cover illustration for the Volpini Suite, 1889
Zincograph with watercolor and gouache additions on yellow paper
Composition: 8 1/16 x 8 1/16" (20.4 x 20.4 cm)
Sheet: 11 15/16 x 10 1/4" (30.3 x 26 cm)

The Metropolitan Museum of Art, New York. Rogers Fund

Gauguin: Metamorphoses



Paul Gauguin, French, 1848–1903

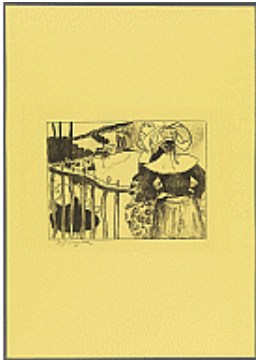
Bathers in Brittany from the Volpini Suite, 1889

Zincograph on yellow paper

Composition: 9 11/16 x 7 7/8" (24.6 x 20 cm)

Sheet: 18 7/8 x 13 3/8" (47.9 x 34 cm)

The Metropolitan Museum of Art, New York. Rogers Fund



Paul Gauguin, French, 1848–1903

Edward Ancourt, Paris

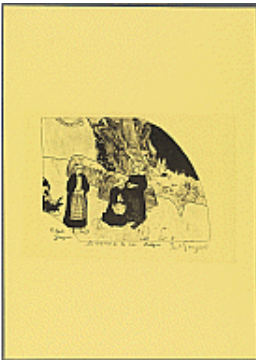
Breton Women Beside a Fence from the Volpini Suite, 1889

Zincograph on yellow paper

Composition: 6 9/16 x 8 7/16" (16.7 x 21.4 cm)

Sheet: 18 13/16 x 13 3/8" (47.8 x 34 cm)

The Metropolitan Museum of Art, New York. Rogers Fund



Paul Gauguin, French, 1848–1903

Dramas of the Sea, Brittany from the Volpini Suite, 1889

Zincograph on yellow paper

Composition: 6 9/16 x 8 7/8" (16.7 x 22.5 cm)

Sheet: 18 11/16 x 13 3/8" (47.5 x 34 cm)

The Metropolitan Museum of Art, New York. Rogers Fund



Paul Gauguin, French, 1848–1903

Dramas of the Sea: Descent into the Maelstrom from the Volpini Suite, 1889

Zincograph on yellow paper

Composition: 6 3/4 x 10 3/4" (17.1 x 27.3 cm)

Sheet: 13 3/16 x 18 3/4" (33.5 x 47.7 cm)

The Metropolitan Museum of Art, New York. Rogers Fund

Gauguin: Metamorphoses



Paul Gauguin, French, 1848–1903

Grasshoppers and Ants: A Memory of Martinique from the Volpini Suite, 1889

Zincograph on yellow paper

Composition: 8 7/16 x 10 1/4" (21.5 x 26.1 cm)

Sheet: 13 9/16 x 18 15/16" (34.4 x 48.1 cm)

The Metropolitan Museum of Art, New York. Rogers Fund



Paul Gauguin, French, 1848–1903

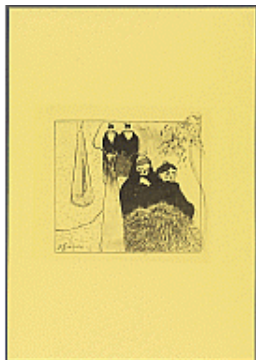
Human Misery from the Volpini Suite, 1889

Zincograph on yellow paper

Composition: 11 1/16 x 9 11/16" (28.1 x 24.6 cm)

Sheet: 19 x 13 3/8" (48.2 x 34 cm)

The Metropolitan Museum of Art, New York. Rogers Fund



Paul Gauguin, French, 1848–1903

Old Maids of Arles from the Volpini Suite, 1889

Zincograph on yellow paper

Composition: 7 1/2 x 8 1/4" (19.1 x 21 cm)

Sheet: 19 x 13 1/4" (48.2 x 33.7 cm)

The Metropolitan Museum of Art, New York. Rogers Fund



Paul Gauguin, French, 1848–1903

Pastoral in Martinique from the Volpini Suite, 1889

Zincograph on yellow paper

Composition: 7 3/16 x 8 3/4" (18.2 x 22.2 cm)

Sheet: 13 7/16 x 18 7/8" (34.2 x 48 cm)

The Metropolitan Museum of Art, New York. Rogers Fund

Gauguin: Metamorphoses



Paul Gauguin, French, 1848–1903

The Pleasures of Brittany from the Volpini Suite, 1889

Zincograph on yellow paper

Composition: 7 15/16 x 9 1/2" (20.2 x 24.1 cm)

Sheet: 13 3/16 x 18 11/16" (33.5 x 47.5 cm)

The Metropolitan Museum of Art, New York. Rogers Fund



Paul Gauguin, French, 1848–1903

Women Washing Clothes from the Volpini Suite, 1889

Zincograph on yellow paper

Composition: 8 3/16 x 10 1/4" (20.8 x 26.1 cm)

Sheet: 13 7/16 x 18 3/4" (34.2 x 47.7 cm)

The Metropolitan Museum of Art, New York. Rogers Fund



Paul Gauguin, French, 1848–1903

Be in Love and You Will Be Happy, 1889

Painted lime wood

37 3/8 x 28 3/8 x 2 1/2" (95 x 72 x 6.4 cm)

Museum of Fine Arts, Boston. Arthur Tracy Cabot Fund



Paul Gauguin, French, 1848–1903

Eve with the Serpent and Other Animals, c. 1889

Painted oak wood

13 9/16 x 8 1/8 x 1 1/16" (34.5 x 20.7 x 2.7 cm)

Ny Carlsberg Glyptotek, Copenhagen

Gauguin: Metamorphoses



Paul Gauguin, French, 1848–1903
Be Mysterious, 1890
Painted lime wood
28 3/4 x 37 3/8 x 1 15/16" (73 x 95 x 5 cm)
Musée d'Orsay, Paris



Paul Gauguin, French, 1848–1903
The Ondines, c. 1890
Painted oak wood
6 1/2 x 22 1/4 x 2 1/4" (16.5 x 56.5 x 5.7 cm)
Private collection



Paul Gauguin, French, 1848–1903
I raro te oviri (Under the Pandanus), 1891
Oil on canvas
26 1/2 x 35 3/4" (67.3 x 90.8 cm)
Dallas Museum of Art, Foundation for the Arts Collection. Gift of the Adele R. Levy Fund, Inc.



Paul Gauguin, French, 1848–1903
Upa upa (The Fire Dance), 1891
Oil on canvas
28 9/16 x 36 5/16" (72.6 x 92.3 cm)
The Israel Museum, Jerusalem. Gift of Yad Hanadiv, Jerusalem, from the collection of Miriam Alexandrine de Rothschild, daughter of the first Baron Edmond de Rothschild

Gauguin: Metamorphoses



Paul Gauguin, French, 1848–1903
Te faruru (Here We Make Love), 1891–1893
Charcoal, ink, and gouache on paper
Sheet: 13 3/4 x 9 13/16" (34.9 x 25 cm)
Private collection



Paul Gauguin, French, 1848–1903
Cylinder with Two Figures, c. 1892
Pua wood
14 x 5 1/2" (35.5 x 14 cm)
Private collection



Paul Gauguin, French, 1848–1903
Head of Tehura (Tehamana) (front) and Eve (or Standing Female Nude) (back), 1892
Painted pua wood
8 3/4 x 3 1/16 x 4 15/16" (22.2 x 7.8 x 12.6 cm)
Musée d'Orsay, Paris. Gift of Agnès Huc de Monfreid, 1951, with life use



Paul Gauguin, French, 1848–1903
Idol with a Pearl, 1892
Painted tamanu wood with gold and pearl additions
9 5/16 x 4 15/16 x 4 1/2" (23.7 x 12.6 x 11.4 cm)
Musée d'Orsay, Paris. Gift of Agnès Huc de Monfreid, 1951

Gauguin: Metamorphoses



Paul Gauguin, French, 1848–1903
Mata mua (In Olden Times), 1892
Oil on canvas
35 13/16 x 27 3/16" (91 x 69 cm)
Carmen Thyssen-Bornemisza Collection, Madrid



Paul Gauguin, French, 1848–1903
Parau na te varua ino (Words of the Devil), 1892
Oil on canvas
36 1/8 x 26 15/16" (91.7 x 68.5 cm)
National Gallery of Art, Washington, D.C. Gift of the W. Averell Harriman Foundation in memory of Marie N. Harriman



Paul Gauguin, French, 1848–1903
Te nave nave fenua (The Delightful Land), 1892
Oil on canvas
36 1/4 x 28 15/16" (92 x 73.5 cm)
Ohara Museum of Art, Kurashiki, Japan



Paul Gauguin, French, 1848–1903
Hina and Fatu, c. 1892
Tamanu wood
12 7/8 x 5 9/16" (32.7 x 14.2 cm)
Art Gallery of Ontario, Toronto. Gift of the Volunteer Committee Fund, 1980

Gauguin: Metamorphoses



Paul Gauguin, French, 1848–1903

Hina with Two Attendants, c. 1892

Gilded tamanu wood

14 5/8 x 5 1/4 x 4 1/4" (37.1 x 13.4 x 10.8 cm)

Hirshhorn Museum and Sculpture Garden, Smithsonian Institution, Washington, D.C. Museum purchase with funds provided under the Smithsonian Institution Collections Acquisition Program, 1981



Paul Gauguin, French, 1848–1903

The Afternoon of a Faun, c. 1892

Tamanu wood

14 x 5 13/16 x 4 7/8" (35.6 x 14.7 x 12.4 cm)

Musée départemental Stéphane Mallarmé, Vulaines-sur-Seine, France



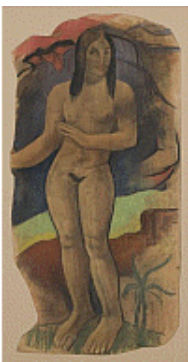
Paul Gauguin, French, 1848–1903

Umete (Dish), c. 1892

Painted tamanu wood

14 1/8 x 35 3/8 x 3 15/16" (35.9 x 89.9 x 10 cm)

Private collection



Paul Gauguin, French, 1848–1903

Reworked study for Te nave nave fenua (The Delightful Land), 1892, reworked c. 1894

Charcoal and pastel on paper

Sheet: 37 x 18 3/4" (94 x 47.6 cm)

Des Moines Art Center Permanent Collections. Gift of John and Elizabeth Bates Cowles

Gauguin: Metamorphoses



Paul Gauguin, French, 1848–1903

Hina Tefatou (The Moon and the Earth), 1893

Oil on burlap

45 x 24 1/2" (114.3 x 62.2 cm)

The Museum of Modern Art, New York. Lillie P. Bliss Collection



Paul Gauguin, French, 1848–1903

Auti te pape (Women at the River), 1893–1894

Woodblock

8 x 13 15/16 x 7/8" (20.3 x 35.4 x 2.3 cm)

Museum of Fine Arts, Boston. Harriet Otis Cruft Fund



Paul Gauguin, French, 1848–1903

Auti te pape (Women at the River), state II/II, from the suite Noa Noa (Fragrant Scent), 1893–1894

Woodcut with hand additions

Sheet (trimmed to comp.): 8 1/16 x 14" (20.4 x 35.5 cm)

The British Museum, London. Bequeathed by Campbell Dodgson



Paul Gauguin, French, 1848–1903

Auti te pape (Women at the River), state II/II, from the suite Noa Noa (Fragrant Scent), 1893–1894

Woodcut with watercolor additions

Composition: 8 1/16 x 14" (20.4 x 35.5 cm)

Sheet: 11 5/16 x 17 11/16" (28.8 x 45 cm)

Bibliothèque de l'Institut National d'Histoire de l'Art, Collections Jacques Doucet, Paris

Gauguin: Metamorphoses



Paul Gauguin, French, 1848–1903

Auti te pape (Women at the River), state II/II, from the suite Noa Noa (Fragrant Scent), 1893–1894

Woodcut

Composition: 8 1/16 x 14" (20.5 x 35.5cm)

Sheet: 9 3/4 x 15 5/8" (24.8 x 39.7 cm)

The Museum of Modern Art, New York. Gift of Abby Aldrich Rockefeller



Paul Gauguin, French, 1848–1903

L'Univers est créé (The Creation of the Universe), 1893–1894

Woodblock

8 x 13 7/8 x 1" (20.3 x 35.2 x 2.5 cm)

Memorial Art Gallery, University of Rochester, N.Y. Gift of Dr. and Mrs. James H. Lockhart, Jr.



Paul Gauguin, French, 1848–1903

L'Univers est créé (The Creation of the Universe), state I/II, from the suite Noa Noa (Fragrant Scent), 1893–1894

Woodcut on pink paper

Sheet (trimmed to comp.): 8 x 13 7/8" (20.3 x 35.2 cm)

Bibliothèque Nationale de France, Paris. Formerly Marcel Guérin Collection



Paul Gauguin, French, 1848–1903

L'Univers est créé (The Creation of the Universe), state II/II, from the suite Noa Noa (Fragrant Scent), 1893–1894

Woodcut with hand additions

Composition: 8 1/16 x 13 7/8" (20.4 x 35.3 cm)

Sheet: 10 1/4 x 19 1/16" (26 x 48.4 cm)

The Metropolitan Museum of Art, New York. Harris Brisbane Dick Fund

Gauguin: Metamorphoses



Paul Gauguin, French, 1848–1903

L'Univers est créé (The Creation of the Universe), state II/II, from the suite Noa Noa (Fragrant Scent), 1893–1894

Woodcut

Composition: 8 x 13 15/16" (20.3 x 35.4 cm)

Sheet: 9 3/4 x 15 11/16" (24.8 x 39.8 cm)

The Museum of Modern Art, New York. Sue and Edgar Wachenheim III Endowment Fund



Paul Gauguin, French, 1848–1903

Mahna no varua ino (The Devil Speaks), state IV/IV, from the suite Noa Noa (Fragrant Scent), 1893–1894

Woodcut

Composition: 8 x 14" (20.3 x 35.6 cm)

Sheet: 11 1/2 x 18 1/16" (29.2 x 45.9 cm)

The Metropolitan Museum of Art, New York. Harris Brisbane Dick Fund



Paul Gauguin, French, 1848–1903

Mahna no varua ino (The Devil Speaks), state IV/IV, from the suite Noa Noa (Fragrant Scent), 1893–1894

Woodcut

Composition: 7 15/16 x 13 3/4" (20.1 x 35 cm)

Sheet: 10 11/16 x 20 1/16" (27.2 x 51 cm)

Frame: 20 11/16 x 26 3/4 x 1 3/8" (52.5 x 68 x 3.5 cm)

Private collection, courtesy Galleri K, Oslo



Paul Gauguin, French, 1848–1903

Mahna no varua ino (The Devil Speaks), state IV/IV, from the suite Noa Noa (Fragrant Scent), 1893–1894

Woodcut

Composition (irreg.): 8 3/8 x 14" (21.2 x 35.5 cm)

Sheet: 9 7/16 x 15 5/8" (24 x 39.7 cm)

Private collection, courtesy Galleri K, Oslo

Gauguin: Metamorphoses



Paul Gauguin, French, 1848–1903

Manao tupapau (Watched by the Spirit of the Dead), state I/IV, from the suite Noa Noa (Fragrant Scent), 1893–1894

Woodcut

Composition: 8 1/16 × 14" (20.4 × 35.5 cm)

Sheet: 8 1/8 × 14 1/8" (20.7 × 35.8 cm)

Museum of Fine Arts, Boston. Bequest of W. G. Russell Allen



Paul Gauguin, French, 1848–1903

Manao tupapau (Watched by the Spirits of the Dead), state III/IV, from the suite Noa Noa (Fragrant Scent), 1893–1894

Woodcut

Composition: 8 1/16 × 14" (20.4 × 35.5 cm)

Sheet: 8 3/16 × 14 1/16" (20.8 × 35.7 cm)

National Gallery of Art, Washington, D.C. Patrons' Permanent Fund



Paul Gauguin, French, 1848–1903

Manao tupapau (Watched by the Spirit of the Dead), state IV/IV, from the suite Noa Noa (Fragrant Scent), 1893–1894

Woodcut

Composition: 8 × 14" (20.3 × 35.6 cm)

Sheet (irreg.): 9 3/4 × 15 9/16" (24.7 × 39.5 cm)

The British Museum, London. Bequeathed by Campbell Dodgson



Paul Gauguin, French, 1848–1903

Manao tupapau (Watched by the Spirit of the Dead), state IV/IV, from the suite Noa Noa (Fragrant Scent), 1893–1894

Woodcut

Composition: 8 3/16 × 13 15/16" (20.8 × 35.4 cm)

Sheet: 9 13/16 × 15 11/16" (24.9 × 39.8 cm)

Minneapolis Institute of Arts. The William Hood Dunwoody Fund, 1947

Gauguin: Metamorphoses



Paul Gauguin, French, 1848–1903

Maruru (Offerings of Gratitude), 1893–1894

Woodblock

7 15/16 x 13 7/8 x 7/8" (20.2 x 35.2 x 2.3 cm)

The Art Institute of Chicago. Gift of the Print and Drawing Club



Paul Gauguin, French, 1848–1903

Maruru (Offerings of Gratitude), state I/III, from the suite Noa Noa (Fragrant Scent), 1893–1894

Woodcut on pink paper

Composition: 8 x 14" (20.3 x 35.5 cm)

Sheet: 8 1/8 x 14 3/16" (20.6 x 36 cm)

Cleveland Museum of Art. Gift of The Print Club of Cleveland



Paul Gauguin, French, 1848–1903

Maruru (Offerings of Gratitude), state III/III, from the suite Noa Noa (Fragrant Scent), 1893–1894

Woodcut

Composition: 8 1/16 x 14" (20.5 x 35.5 cm)

Sheet: 10 7/8 x 18 11/16" (27.6 x 47.4 cm)

Musée du quai Branly, Paris. Donation Lucien Volland



Paul Gauguin, French, 1848–1903

Maruru (Offerings of Gratitude), state III/III, from the suite Noa Noa (Fragrant Scent), 1893–1894

Woodcut

Composition: 8 1/16 x 14" (20.5 x 35.5 cm)

Sheet: 8 1/16 x 14 1/8" (20.5 x 35.8 cm)

Sterling and Francine Clark Art Institute, Williamstown, MA

Gauguin: Metamorphoses



Paul Gauguin, French, 1848–1903

Maruru (Offerings of Gratitude), state III/III, from the suite Noa Noa (Fragrant Scent), 1893–1894

Woodcut with hand additions

Composition: 8 1/16 × 14" (20.5 × 35.6 cm)

Sheet: 9 7/8 × 15 5/8" (25.1 × 39.7 cm)

Library of Congress, Prints and Photographs Division, Washington, D.C.



Paul Gauguin, French, 1848–1903

Nave nave fenua (Delightful Land), 1893–1894

Woodblock

13 7/8 × 8 × 7/8" (35.3 × 20.3 × 2.3 cm)

Museum of Fine Arts, Boston. Bequest of W. G. Russell Allen



Paul Gauguin, French, 1848–1903

Nave nave fenua (Delightful Land), state I/IV, from the suite Noa Noa (Fragrant Scent), 1893–1894

Woodcut on pink paper

Sheet (trimmed to comp.): 13 7/8 × 8" (35.2 × 20.3 cm)

Bibliothèque Nationale de France, Paris. Formerly Marcel Guérin Collection



Paul Gauguin, French, 1848–1903

Nave nave fenua (Delightful Land), state II/IV, from the suite Noa Noa (Fragrant Scent), 1893–1894

Woodcut

Composition: 14 × 8 1/8" (35.5 × 20.6 cm)

Sheet: 14 13/16 × 9 15/16" (37.6 × 25.2 cm)

National Gallery of Art, Washington, D.C. Rosenwald Collection

Gauguin: Metamorphoses



Paul Gauguin, French, 1848–1903

Nave nave fenua (Delightful Land), state III/IV, from the suite Noa Noa (Fragrant Scent), 1893–1894

Woodcut with watercolor additions

Sheet (trimmed to comp.): 14 x 8" (35.6 x 20.3 cm)

The Metropolitan Museum of Art, New York. Rogers Fund



Paul Gauguin, French, 1848–1903

Nave nave fenua (Delightful Land), state IV/IV, from the suite Noa Noa (Fragrant Scent), 1893–1894

Woodcut with hand additions

Composition: 13 15/16 x 8 1/16" (35.4 x 20.4 cm)

Sheet: 15 1/2 x 10" (39.3 x 25.4 cm)

Museum of Fine Arts, Gifu, Japan



Paul Gauguin, French, 1848–1903

Nave nave fenua (Delightful Land), state IV/IV, from the suite Noa Noa (Fragrant Scent), 1893–1894

Woodcut

Composition: 13 3/4 x 8" (34.9 x 20.3 cm)

Sheet: 18 3/4 x 10 11/16" (47.6 x 27.2 cm)

The Metropolitan Museum of Art, New York. Harris Brisbane Dick Fund



Paul Gauguin, French, 1848–1903

Nave nave fenua (Delightful Land), state IV/IV, from the suite Noa Noa (Fragrant Scent), 1893–1894

Woodcut

Composition: 14 x 8 1/16" (35.5 x 20.5 cm)

Sheet: 15 11/16 x 9 13/16" (39.9 x 24.9cm)

The Museum of Modern Art, New York. Gift of Abby Aldrich Rockefeller

Gauguin: Metamorphoses



Paul Gauguin, French, 1848–1903

Noa Noa (Fragrant Scent), 1893–1894

Woodblock

13 7/8 x 8 x 7/8" (35.2 x 20.3 x 2.2 cm)

The Metropolitan Museum of Art, New York. Harris Brisbane Dick Fund



Paul Gauguin, French, 1848–1903

Noa Noa (Fragrant Scent), state I/III, from the suite Noa Noa (Fragrant Scent), 1893–1894

Woodcut on pink paper

Composition: 14 x 8 1/16" (35.5 x 20.4 cm)

Sheet: 14 3/16 x 8 1/16" (36 x 20.5 cm)

Private collection, courtesy Galleri K, Oslo



Paul Gauguin, French, 1848–1903

Noa Noa (Fragrant Scent), state III/III, from the suite Noa Noa (Fragrant Scent), 1893–1894

Woodcut

Composition: 14 1/8 x 8 1/16" (35.8 x 20.4 cm)

Sheet: 17 9/16 x 9 7/16" (44.6 x 23.9 cm)

EWK, Bern, Switzerland



Paul Gauguin, French, 1848–1903

Noa Noa (Fragrant Scent), state III/III, from the suite Noa Noa (Fragrant Scent), 1893–1894

Woodcut

Sheet (trimmed to comp.): 14 1/4 x 7 13/16" (36.2 x 19.8 cm)

Musée du quai Branly, Paris

Gauguin: Metamorphoses



Paul Gauguin, French, 1848–1903

Noa Noa (Fragrant Scent), state III/III, from the suite Noa Noa (Fragrant Scent), 1893–1894

Woodcut

Composition: 14 x 8 1/16" (35.5 x 20.5 cm)

Sheet: 15 1/2 x 9 5/8" (39.3 x 24.4 cm)

The Museum of Modern Art, New York. Lillie P. Bliss Collection



Paul Gauguin, French, 1848–1903

Te atua (The Gods), state I/III, from the suite Noa Noa (Fragrant Scent), 1893–1894

Woodcut

Sheet (trimmed to comp.): 8 1/16 x 14" (20.5 x 35.5 cm)

Kupferstichkabinett, Staatliche Museen, Berlin



Paul Gauguin, French, 1848–1903

Te atua (The Gods), state III/III, from the suite Noa Noa (Fragrant Scent), 1893–1894

Woodcut

Composition: 8 1/16 x 14 1/16" (20.5 x 35.7 cm)

Sheet: 8 1/8 x 14 1/16" (20.6 x 35.7 cm)

Sterling and Francine Clark Art Institute, Williamstown, MA



Paul Gauguin, French, 1848–1903

Te atua (The Gods), state III/III, from the suite Noa Noa (Fragrant Scent), 1893–1894

Woodcut

Composition: 8 1/16 x 14" (20.5 x 35.5 cm)

Sheet: 9 3/4 x 14 13/16" (24.7 x 37.7 cm)

The Museum of Modern Art, New York. Gift of Abby Aldrich Rockefeller

Gauguin: Metamorphoses



Paul Gauguin, French, 1848–1903

Te atua (The Gods), state III/III, from the suite Noa Noa (Fragrant Scent), 1893–1894

Woodcut

Composition: 8 1/16 x 14" (20.5 x 35.5 cm)

Sheet: 15 9/16 x 9 3/4" (39.6 x 24.7 cm)

The Museum of Modern Art, New York. Lillie P. Bliss Collection



Paul Gauguin, French, 1848–1903

Te atua (The Gods), state III/III, from the suite Noa Noa (Fragrant Scent), 1893–1894

Woodcut

Composition: 8 1/8 x 13 15/16" (20.7 x 35.4 cm)

Sheet: 9 1/16 x 15 1/16" (23 x 38.3 cm)

Philadelphia Museum of Art. Purchased with the John D. McIlhenny Fund



Paul Gauguin, French, 1848–1903

Te faruru (Here We Make Love), state I/VI, from suite Noa Noa (Fragrant Scent), 1893–1894

Woodcut on pink paper

Sheet (trimmed to comp.): 14 1/16 x 8" (35.7 x 20.3 cm)

Bibliothèque Nationale de France, Paris. Gift of Marcel Guérin



Paul Gauguin, French, 1848–1903

Te faruru (Here We Make Love), state IV/VI, from the suite Noa Noa (Fragrant Scent), 1893–1894

Woodcut with hand additions

Sheet (trimmed to comp.): 14 1/8 x 8 1/16" (35.9 x 20.5 cm)

Sterling and Francine Clark Art Institute, Williamstown, MA

Gauguin: Metamorphoses



Paul Gauguin, French, 1848–1903

Te faruru (Here We Make Love), state V/VI, from the suite Noa Noa (Fragrant Scent), 1893–1894

Woodcut

Composition: 14 1/16 x 8 1/16" (35.7 x 20.5cm)

Sheet: 15 3/4 x 9 13/16" (40 x 24.9cm)

The Museum of Modern Art, New York. Gift of Abby Aldrich Rockefeller



Paul Gauguin, French, 1848–1903

Te po (Eternal Night), 1893–1894

Woodblock

8 1/8 x 14 x 7/8" (20.6 x 35.6 x 2.3 cm)

Museum of Fine Arts, Boston. Gift of Philip Hofer, Esq.



Paul Gauguin, French, 1848–1903

Te po (Eternal Night), state III/IV, from the suite Noa Noa (Fragrant Scent), 1893–1894

Woodcut

Sheet (trimmed to comp.): 8 1/16 x 13 9/16" (20.5 x 34.5 cm)

Kupferstichkabinett, Staatliche Museen, Berlin



Paul Gauguin, French, 1848–1903

Te po (Eternal Night), state III/IV, from the suite Noa Noa (Fragrant Scent), 1893–1894

Woodcut

Sheet (trimmed to comp.): 8 1/8 x 14" (20.6 x 35.6 cm)

Musée du quai Branly, Paris

Gauguin: Metamorphoses



Paul Gauguin, French, 1848–1903

Te po (Eternal Night), state IV/IV, from the suite Noa Noa (Fragrant Scent), 1893–1894

Woodcut on pink paper

Composition: 8 1/4 x 14 1/4" (21 x 36.2 cm)

Sheet: 10 7/8 x 16 1/2" (27.6 x 41.9 cm)

The Metropolitan Museum of Art, New York. Harris Brisbane Dick Fund



Paul Gauguin, French, 1848–1903

Te po (Eternal Night), state IV/IV, from the suite Noa Noa (Fragrant Scent), 1893–1894

Woodcut

Composition: 8 x 14 1/8" (20.3 x 35.9 cm)

Sheet: 9 x 14 3/4" (22.9 x 37.5 cm)

Collection UCLA Grunwald Center for the Graphic Arts, Hammer Museum. The Fred Grunwald Collection



Paul Gauguin, French, 1848–1903

Square Vase with Tahitian Gods, 1893–1895

Terracotta

13 1/2 x 5 11/16 x 5 1/2" (34.3 x 14.4 x 14 cm)

Designmuseum Danmark, Copenhagen



Paul Gauguin, French, 1848–1903

Scene of Worship with Head of Hina in Profile from the relief ensemble Pape moe (Mysterious Water), 1894

Painted oak wood

7 3/4 x 18 x 2" (19.7 x 45.7 x 5.1 cm)

Private Collection

Gauguin: Metamorphoses



Paul Gauguin, French, 1848–1903

Head of Hina and Two Vivo Players from the relief ensemble Pape moe (Mysterious Water), 1894

Painted oak wood

7 3/4 x 18 x 2" (19.7 x 45.7 x 5.1 cm)

Private Collection



Paul Gauguin, French, 1848–1903

la orana Maria (Hail Mary), 1894

Watercolor monotype

Sheet: 16 15/16 x 5 1/2" (43 x 14 cm)

Collection Rijksprentenkabinet, Rijksmuseum Amsterdam



Paul Gauguin, French, 1848–1903

la orana Maria (Hail Mary), 1894

Watercolor monotype

Sheet: 8 3/4 x 5 11/16" (22.3 x 14.5 cm)

Museum of Fine Arts, Boston. Bequest of W. G. Russell Allen



Paul Gauguin, French, 1848–1903

Nave nave fenua (Delightful Land), 1894

Watercolor monotype with watercolor additions

Sheet: 15 15/16 x 9 1/2" (40.5 x 24.2 cm)

Mount: 19 3/16 x 14 1/8" (48.8 x 35.8 cm)

Museum of Fine Arts, Boston. Bequest of W. G. Russell Allen

Gauguin: Metamorphoses



Paul Gauguin, French, 1848–1903

Tahitians, 1894

Watercolor monotype with watercolor additions

Sheet: 9 7/16 x 7 7/8" (24 x 20 cm)

The British Museum, London. Bequeathed by Campbell Dodgson



Paul Gauguin, French, 1848–1903

Oviri (Savage), 1894

Partly enameled stoneware

29 1/2 x 7 1/2 x 10 5/8" (75 x 19 x 27 cm)

Musée d'Orsay, Paris



Paul Gauguin, French, 1848–1903

Oviri (Savage), 1894

Woodcut

Composition: 8 1/16 x 4 13/16" (20.4 x 12.2 cm)

Sheet: 14 9/16 x 7 1/2" (37 x 19 cm)

National Gallery of Art, Washington, D.C. Rosenwald Collection



Paul Gauguin, French, 1848–1903

Oviri (Savage), 1894

Woodcut

Sheet (trimmed to comp.): 8 1/16 x 4 3/4" (20.5 x 12 cm)

Sterling and Francine Clark Art Institute, Williamstown, MA

Gauguin: Metamorphoses



Paul Gauguin, French, 1848–1903

Oviri (Savage), 1894

Woodcut with watercolor additions

Sheet (trimmed to comp.): 8 1/16 x 4 3/4" (20.5 x 12 cm)

Private collection, courtesy Galleri K, Oslo



Paul Gauguin, French, 1848–1903

Oviri (Savage), 1894

Woodcut

Composition (irreg.): 8 1/8 x 5 3/8" (20.6 x 13.6 cm)

Sheet: 9 13/16 x 7 15/16" (24.9 x 20.1 cm)

Private collection, courtesy Galleri K, Oslo



Paul Gauguin, French, 1848–1903

Oviri (Savage), 1894

Woodcut with watercolor additions

Sheet (trimmed to comp.): 8 1/16 x 4 7/16" (20.5 x 11.3 cm)

Private collection, USA



Paul Gauguin, French, 1848–1903

Tahitian Girl in a Pink Pareu, 1894

Gouache, watercolor, and ink on paper

Sheet: 9 5/8 x 9 1/4" (24.4 x 23.5 cm)

The Museum of Modern Art, New York. The William S. Paley Collection

Gauguin: Metamorphoses



Paul Gauguin, French, 1848–1903

Tahitian Girl in a Pink Pareu, 1894

Gouache and watercolor monotype

Sheet: 9 11/16 x 5 13/16" (24.6 x 14.8 cm)

Art Gallery of Ontario, Toronto. Gift of Vincent Tovell in memory of his parents, Harold and Ruth Tovell, 1999



Paul Gauguin, French, 1848–1903

Tahitian Girl in a Pink Pareu, 1894

Gouache and watercolor monotype

Sheet: 10 13/16 x 10 1/2" (27.5 x 26.6 cm)

The Art Institute of Chicago. Gift of Walter S. Brewster



Paul Gauguin, French, 1848–1903

Two Standing Tahitian Women, 1894

Watercolor monotype with watercolor additions

Composition: 5 7/8 x 5 1/2" (15 x 14 cm)

Sheet: 11 15/16 x 9 3/16" (30.3 x 23.3 cm)

The British Museum, London. Accepted by HM Government in lieu of inheritance tax and allocated to The British Museum, 2011



Paul Gauguin, French, 1848–1903

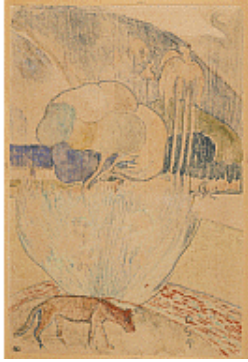
Two Standing Tahitian Women, 1894

Watercolor monotype with watercolor additions

Sheet: 7 5/16 x 5 11/16" (18.5 x 14.5 cm)

Private collection

Gauguin: Metamorphoses

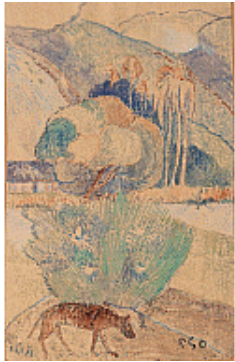


Paul Gauguin, French, 1848–1903

The Mango Tree, 1894

Watercolor monotype with watercolor and white chalk additions
Sheet: 10 3/8 x 6 15/16" (26.4 x 17.7 cm)

Musée d'Orsay, Paris. Bequest of Mrs Thadée Natanson



Paul Gauguin, French, 1848–1903

The Mango Tree, c. 1894

Watercolor monotype
Sheet: 11 3/8 x 7 1/8" (28.9 x 18.1 cm)

Museum of Fine Arts, Gifu, Japan



Paul Gauguin, French, 1848–1903

Reclining Tahitian, 1894

Watercolor monotype with watercolor additions
Sheet: 9 5/8 x 15 9/16" (24.5 x 39.5 cm)

Private collection



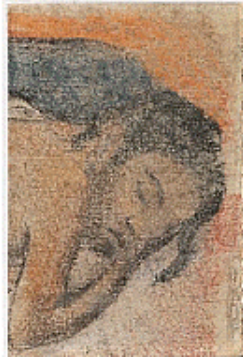
Paul Gauguin, French, 1848–1903

Manao tupapau (Watched by the Spirit of the Dead), 1894
Woodcut

Composition: 8 3/4 x 10 3/8" (22.2 x 26.4 cm)
Sheet: 10 7/8 x 11 5/16" (27.7 x 28.8 cm)

Sterling and Francine Clark Art Institute, Williamstown, MA

Gauguin: Metamorphoses



Paul Gauguin, French, 1848–1903

Reclining Tahitian (Study after Manao Tupapau [Watched by the Spirit of the Dead]), 1894

Watercolor monotype with watercolor additions

Sheet: 8 1/4 x 5 9/16" (21 x 14.1 cm)

Private collection



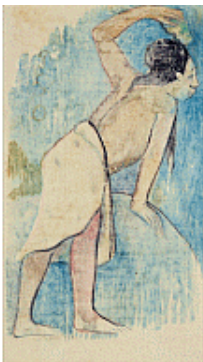
Paul Gauguin, French, 1848–1903

Reclining Nude, 1894 or 1895

Charcoal, black chalk, and pastel on paper

Sheet: 11 13/16 x 24 7/16" (30 x 62 cm)

National Gallery of Art, Washington, D.C. Gift (partial and promised) of Robert and Mercedes Eichholz, in honor of the fiftieth anniversary of the National Gallery of Art



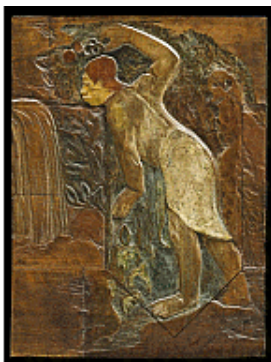
Paul Gauguin, French, 1848–1903

Pape moe (Mysterious Water), 1894

Watercolor monotype

Sheet: 10 5/8 x 6 1/8" (27 x 15.6 cm)

Musée Marmottan Monet, Paris



Paul Gauguin, French, 1848–1903

Pape moe (Mysterious Water), 1894

Painted oak wood

32 1/16 x 24 7/16 x 2 1/16" (81.5 x 62 x 5.3 cm)

Ny Carlsberg Glyptotek, Copenhagen

Gauguin: Metamorphoses



Paul Gauguin, French, 1848–1903

A Fisherman Drinking Beside His Canoe, state II/II, 1894

Woodcut with watercolor additions

Sheet (trimmed to comp.): 8 1/16 x 5 7/16" (20.5 x 13.8 cm)

Private collection, courtesy Galleri K, Oslo



Paul Gauguin, French, 1848–1903

A Fisherman Drinking Beside His Canoe, state II/II, 1894

Woodcut with crayon and watercolor additions

Sheet (trimmed to comp.): 8 1/16 x 5 1/2" (20.5 x 13.9 cm)

Private collection, USA



Paul Gauguin, French, 1848–1903

Mahana atua (Day of the God), state I/II, 1894–1895

Woodcut with watercolor additions

Composition: 7 1/8 x 7 15/16" (18.1 x 20.2 cm)

Sheet: 7 1/4 x 8 1/16" (18.4 x 20.5 cm)

The Art Institute of Chicago. Clarence Buckingham Collection



Paul Gauguin, French, 1848–1903

Manao tupapau (Watched by the Spirit of the Dead), state III/IV, 1894–1895

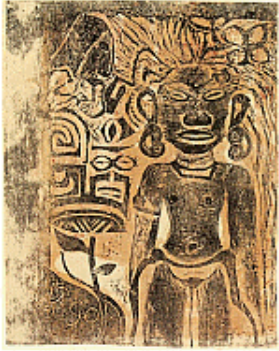
Woodcut with hand and stencil additions in watercolor

Composition: 9 x 20 1/2" (22.9 x 52.1 cm)

Sheet: 9 1/4 x 22 13/16" (23.5 x 58 cm)

Museum of Fine Arts, Boston. Gift of W. G. Russell Allen

Gauguin: Metamorphoses



Paul Gauguin, French, 1848–1903

Tahitian Idol, 1894–1895

Woodcut with hand additions probably in thinned oil paint
Sheet (trimmed to comp.): 5 15/16 x 4 3/4" (15.1 x 12 cm)

EWK, Bern, Switzerland



Paul Gauguin, French, 1848–1903

Tahitian Idol, 1894–1895

Woodcut over hand additions probably in thinned oil paint
Sheet (trimmed to comp.): 5 15/16 x 4 5/8" (15.1 x 11.7 cm)

Private collection, USA



Paul Gauguin, French, 1848–1903

Head with Horns, 1895–1897

Wood with traces of paint

Component (head): 8 11/16 x 9 x 4 3/4" (22 x 22.8 x 12 cm)

Base: 7 7/8 x 9 13/16 x 6 7/8" (20 x 25 x 17.5 cm)

The J. Paul Getty Museum, Los Angeles



Paul Gauguin, French, 1848–1903

Tahitian Girl, c. 1896

Wood, felt, silk cord, shell, and mother-of-pearl
37 3/8 x 7 1/2 x 8" (94.9 x 19.1 x 20.3 cm)

Raymond and Patsy Nasher Collection, Nasher Sculpture Center, Dallas

Gauguin: Metamorphoses



Paul Gauguin, French, 1848–1903

Catholicism and the Modern Mind, 1897–1902

Manuscript (composed 1897-98, transcribed 1902) and cover with two oil transfer drawings (outside front and back, 1902) and two woodcuts (inside front and back, 1898-99)

Cover (closed): 12 5/8 x 7 1/16 x 13/16" (32.1 x 17.9 x 2.1 cm)

Saint Louis Art Museum, Gift of Vincent L. Price Jr., in memory of his parents, Marguerite and Vincent L. Price



Paul Gauguin, French, 1848–1903

The White Horse, 1898

Oil on canvas

55 1/8 x 36" (140 x 91.5 cm)

Musée d'Orsay, Paris. Acquired from Daniel de Monfreid by the Musée du Luxembourg



Paul Gauguin, French, 1848–1903

Faa iheihe (Tahitian Pastoral), 1898

Oil on canvas

21 1/4 x 66 3/4" (54 x 169.5 cm)

Tate, London. Presented by Lord Duveen



Paul Gauguin, French, 1848–1903

Te arii vahine—Opoi (The Noble Woman—Tired; or Woman with Mangoes—Tired) from the Volland Suite, 1898

Woodcut

Composition (irreg.): 6 3/8 x 11 1/2" (16.2 x 29.2 cm)

Sheet: 6 15/16 x 11 7/8" (17.6 x 30.2 cm)

Private collection, courtesy Galleri K, Oslo

Gauguin: Metamorphoses



Paul Gauguin, French, 1848–1903

Women, Animals, and Leaves, state II/II, from the Volland Suite, 1898

Woodcut

Composition: 6 7/16 × 11 15/16" (16.4 × 30.4 cm)

Sheet: 9 × 11 15/16" (22.8 × 30.4 cm)

Private collection, courtesy Galleri K, Oslo



Paul Gauguin, French, 1848–1903

Human Misery from the Volland Suite, 1898–1899

Woodcut

Composition: 7 1/2 × 11 13/16" (19 × 30 cm)

Sheet: 8 15/16 × 12" (22.7 × 30.5 cm)

Private collection, courtesy Galleri K, Oslo



Paul Gauguin, French, 1848–1903

Wayside Shrine in Brittany, 1898–1899

Woodblock

6 1/2 × 10 7/16 × 1 5/16" (16.5 × 26.5 × 3.4 cm)

Bibliothèque Nationale de France, Paris



Paul Gauguin, French, 1848–1903

Wayside Shrine in Brittany from the Volland Suite, 1898–1899

Woodcut

Composition: 5 15/16 × 8 7/8" (15.1 × 22.6 cm)

Sheet: 5 15/16 × 8 7/8" (15.1 × 22.6 cm)

Private collection, courtesy Galleri K, Oslo

Gauguin: Metamorphoses



Paul Gauguin, French, 1848–1903

The Ox Cart from the Volland Suite, 1898–1899

Woodcut

Composition (irreg.): 7 7/8 × 11 13/16" (20 × 30 cm)

Sheet: 9 × 11 7/8" (22.8 × 30.2 cm)

Private collection, courtesy Galleri K, Oslo



Paul Gauguin, French, 1848–1903

Tahitian Carrying Bananas, state II/II, from the Volland Suite, 1898–1899

Woodcut

Composition: 6 3/8 × 11 1/8" (16.2 × 28.2 cm)

Sheet: 7 7/8 × 11 7/16" (20 × 29 cm)

Private collection, courtesy Galleri K, Oslo



Paul Gauguin, French, 1848–1903

Plate with the Head of a Horned Devil from the Volland Suite, 1898–1899

Woodcut

Composition: 8 15/16 × 11 9/16" (22.7 × 29.4 cm)

Sheet: 8 15/16 × 11 9/16" (22.7 × 29.4 cm)

Private collection, courtesy Galleri K, Oslo



Paul Gauguin, French, 1848–1903

Interior of a Tahitian Hut from the Volland Suite, 1898–1899

Woodcut

Composition: 4 5/16 × 8 1/4" (11 × 21 cm)

Sheet: 6 × 8 15/16" (15.3 × 22.7 cm)

Private collection, courtesy Galleri K, Oslo

Gauguin: Metamorphoses



Paul Gauguin, French, 1848–1903

The Rape of Europa, 1898–1899

Woodblock

9 7/16 x 9 1/16 x 1 9/16" (24 x 23 x 4 cm)

Museum of Fine Arts, Boston. Harriet Otis Cruft Fund



Paul Gauguin, French, 1848–1903

The Rape of Europa from the Vollard Suite, 1898–1899

Woodcut printed on translucent paper and pasted face down onto wove paper

Composition: 9 1/4 x 9" (23.5 x 22.8 cm)

Sheet (irreg.): 9 1/4 x 9" (23.5 x 22.8 cm)

Private collection, courtesy Galleri K, Oslo



Paul Gauguin, French, 1848–1903

Buddha from the Vollard Suite, 1898–1899

Woodcut

Composition: 11 15/16 x 9" (30.3 x 22.8 cm)

Sheet: 11 15/16 x 8 15/16" (30.3 x 22.8 cm)

Private collection, courtesy Galleri K, Oslo



Paul Gauguin, French, 1848–1903

Eve, state II/II, from the Vollard Suite, 1898–1899

Woodcut

Composition: 11 13/16 x 8 7/8" (30 x 22.6 cm)

Sheet: 11 13/16 x 8 7/8" (30 x 22.6 cm)

Private collection, courtesy Galleri K, Oslo

Gauguin: Metamorphoses



Paul Gauguin, French, 1848–1903

Be in Love and You Will Be Happy, states I/II and II/II, from the Volland Suite, 1898
Woodcut (state II pasted over state I)
Sheet (trimmed to comp.): 6 5/16 x 10 5/16" (16 x 26.2 cm)

Private collection, courtesy Galleri K, Oslo



Paul Gauguin, French, 1848–1903

Change of Residence, states I/II and II/II, from the Volland Suite, 1899
Woodcut (state II pasted over state I)
Sheet (trimmed to comp.): 6 1/8 x 11 3/4" (15.6 x 29.9 cm)

Private collection, courtesy Galleri K, Oslo



Paul Gauguin, French, 1848–1903

Te atua (The Gods), state I/II, from the Volland Suite, 1899
Woodcut
Composition: 9 1/4 x 8 1/16" (23.5 x 20.5 cm)
Sheet: 9 7/16 x 8 3/16" (24 x 20.8 cm)

Private collection



Paul Gauguin, French, 1848–1903

Te atua (The Gods), state II/II, from the Volland Suite, 1899
Woodcut
Composition: 9 1/4 x 8 3/16" (23.5 x 20.8 cm)
Sheet: 9 5/16 x 8 3/16" (23.7 x 20.8 cm)

Private collection

Gauguin: Metamorphoses



Paul Gauguin, French, 1848–1903

Te atua (The Gods), states I/II and II/II, from the Volland Suite, 1899
Woodcut (state II pasted over state I)
Composition: 8 7/8 x 7 15/16" (22.5 x 20.1 cm)
Sheet: 19 7/8 x 14 3/4" (50.5 x 37.5 cm)

National Gallery of Art, Washington, D. C. Rosenwald Collection



Paul Gauguin, French, 1848–1903

Two Tahitian Women, 1899
Oil on canvas
37 x 28 1/2" (94 x 72.4 cm)

The Metropolitan Museum of Art, New York. Gift of William Church Osborn



Paul Gauguin, French, 1848–1903

Study of Two Tahitians, c. 1899
Black pencil and charcoal on paper
Sheet: 16 15/16 x 12" (43 x 30.5 cm)

Jean Bonna Collection, Geneva



Paul Gauguin, French, 1848–1903

Tahitian Faces (Frontal View and Profiles), c. 1899
Charcoal on paper
Sheet: 16 1/8 x 12 1/4" (41 x 31.1 cm)

The Metropolitan Museum of Art, New York. Purchase, The Annenberg Foundation Gift

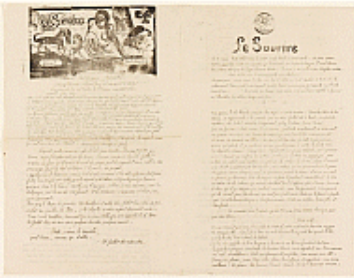
Gauguin: Metamorphoses



Paul Gauguin, French, 1848–1903
Still Life with Pitcher and Fruits, c. 1899
Gouache monotype
Sheet: 9 1/16 x 11 3/4" (23 x 29.8 cm)
Steven Rattner and Maureen White



Paul Gauguin, French, 1848–1903
Two Tahitian Women with Flowers and Fruit, c. 1899
Watercolor monotype with watercolor and gouache additions
Sheet: 8 7/8 x 6 1/2" (22.5 x 16.5 cm)
Private collection



Paul Gauguin, French, 1848–1903
Le Sourire (The Smile), 1899–1900
Mimeographed newspapers with woodcut illustrations
Page: 14 13/16 x 10 1/8" (37.7 x 25.7 cm)
Private collection, USA



Paul Gauguin, French, 1848–1903
Studies of Arms, Legs, and a Head, 1899–1902
Oil transfer drawing
Sheet: 12 1/8 x 9 11/16" (30.7 x 24.6 cm)
Bibliothèque Nationale de France, Paris

Gauguin: Metamorphoses



Paul Gauguin, French, 1848–1903
Studies of a Torso and Two Hands, 1899–1902
Oil transfer drawing
Sheet: 5 5/16 x 5 11/16" (13.5 x 14.5 cm)
Galerie Berès, Paris



Paul Gauguin, French, 1848–1903
Two Tahitians Gathering Fruit, 1899 or 1900
Recto: oil transfer drawing; verso: graphite and colored pencil
Sheet: 24 13/16 x 20 5/16" (63 x 51.6 cm)
National Gallery of Art, Washington, D.C. Collection Mr. and Mrs. Paul Mellon



Paul Gauguin, French, 1848–1903
Tahitian Shore, c. 1900
Oil transfer drawing
Sheet: 13 1/8 x 20" (33.3 x 50.8 cm)
National Gallery of Art, Washington, D.C. Rosenwald Collection



Paul Gauguin, French, 1848–1903
Tahitian Woman with Evil Spirit, c. 1900
Recto: oil transfer drawing; verso: graphite and colored pencil
Sheet: 25 9/16 x 18 1/8" (65 x 46 cm)
The Museum of Modern Art, New York. Gift of Abby Aldrich Rockefeller (by exchange), Vincent d'Aquila and Harry Soviak Bequest Fund (by exchange), and acquired through the generosity of The Abby Aldrich Rockefeller Endowment for Prints, Sue and Edgar Wachenheim III, Mary M. Spencer, and Stephen Dull

Gauguin: Metamorphoses



Paul Gauguin, French, 1848–1903

Tahitian Woman with Evil Spirit, c. 1900

Recto: oil transfer drawing; verso: graphite, colored pencil, and oil paint
Sheet: 25 1/8 x 20 3/16" (63.8 x 51.2 cm)

Städel Museum Frankfurt am Main



Paul Gauguin, French, 1848–1903

Tahitian Woman with Evil Spirit, c. 1900

Recto: oil transfer drawing; verso: graphite and colored pencil
Sheet: 25 1/4 x 20 5/16" (64.1 x 51.6 cm)

Private collection



Paul Gauguin, French, 1848–1903

Peace and War, 1901

Painted miro wood

11 5/8 x 26 x 1 9/16" (29.5 x 66 x 4 cm)

Musée d'Orsay, Paris



Paul Gauguin, French, 1848–1903

Studies of Cows, 1901–1902

Oil transfer drawing with ink additions

Sheet: 6 1/8 x 9 13/16" (15.5 x 24.9 cm)

Bibliothèque Nationale de France, Paris

Gauguin: Metamorphoses



Paul Gauguin, French, 1848–1903

Animal Studies, 1901–1902

Oil transfer drawing

Sheet: 12 9/16 x 9 7/8" (31.9 x 25.1 cm)

National Gallery of Art, Washington, D.C. Rosenwald Collection



Paul Gauguin, French, 1848–1903

Marquesan Landscape, 1901–1902

Oil transfer drawing

Sheet: 9 1/4 x 4 7/8" (23.5 x 12.4 cm)

Collection UCLA Grunwald Center for the Graphic Arts, Hammer Museum. Gift of Mr. and Mrs. Fred Grunwald



Paul Gauguin, French, 1848–1903

Change of Residence, 1901–1902

Oil transfer drawing

Sheet (irreg.): 5 1/2 x 8 9/16" (14 x 21.7 cm)

The Museum of Modern Art, New York. The Sue and Edgar Wachenheim III Endowment for Prints and Illustrated Books



Paul Gauguin, French, 1848–1903

Women and Angels in a Studio, 1901–1902

Oil transfer drawing

Sheet: 20 5/8 x 18 3/4" (52.4 x 47.6 cm)

Private Collection

Gauguin: Metamorphoses



Paul Gauguin, French, 1848–1903

Crouching Tahitian Woman Seen From The Back, c. 1901-1902

Oil transfer drawing with crayon additions

Sheet: 12 1/2 x 10 3/16" (31.8 x 25.8 cm)

Private collection, USA



Paul Gauguin, French, 1848–1903

Three Tahitian Heads, c. 1901–1903

Oil transfer drawing

Sheet: 10 7/16 x 8 1/4" (26.5 x 21 cm)

Private Collection



Paul Gauguin, French, 1848–1903

Nativity, 1902

Oil transfer drawing

Sheet: 8 7/8 x 8 7/8" (22.5 x 22.5 cm)

Musée du quai Branly, Paris. Donation Lucien Volland



Paul Gauguin, French, 1848–1903

Two Women, 1902

Oil on canvas

29 1/8 x 25 3/8" (74 x 64.5 cm)

Private collection

Gauguin: Metamorphoses



Paul Gauguin, French, 1848–1903

Girl with a Fan, 1902

Oil on canvas

36 3/16 x 28 11/16" (91.9 x 72.9 cm)

Museum Folkwang, Essen



Paul Gauguin, French, 1848–1903

Change of Residence, c. 1902

Recto: oil transfer drawing; verso: graphite and crayon

Sheet: 14 15/16 x 21 5/8" (37.9 x 54.9 cm)

Galerie Berès, Paris



Paul Gauguin, French, 1848–1903

Head of a Marquesan, c. 1902

Gouache monotype with watercolor, gum arabic, and white chalk additions

Sheet: 11 1/8 x 10 1/8" (28.3 x 25.7 cm)

Private Collection



Paul Gauguin, French, 1848–1903

Marquesan Landscape with Figure, c. 1902

Gouache monotype with white chalk additions

Sheet: 12 1/4 x 21 5/8" (31.1 x 55 cm)

Private Collection

Gauguin: Metamorphoses



Paul Gauguin, French, 1848–1903
Marquesan Scene, c. 1902
Watercolor monotype
Sheet: 9 13/16 x 12 13/16" (25 x 32.5 cm)
Museum of Fine Arts, Budapest



Paul Gauguin, French, 1848–1903
Return from the Hunt, c. 1902
Oil transfer drawing
Sheet: 12 11/16 x 16 7/16" (32.2 x 41.8 cm)
Städels Museum Frankfurt am Main. Property of the Städtelscher Museums-Verein e.V



Paul Gauguin, French, 1848–1903
Two Marquesans, c. 1902
Oil transfer drawing
Sheet: 17 7/8 x 13 3/4" (45.4 x 34.9 cm)
National Gallery of Art, Washington, D.C. Rosenwald Collection



Paul Gauguin, French, 1848–1903
Two Marquesans, c. 1902
Oil transfer drawing
Sheet: 14 9/16 x 12 7/8" (37 x 32.7 cm)
Philadelphia Museum of Art. Purchased with the Alice Newton Osborn Fund

Gauguin: Metamorphoses



Paul Gauguin, French, 1848–1903

Two Marquesans, c. 1902

Oil transfer drawing

Sheet: 12 5/8 x 20 1/16" (32.1 x 51 cm)

The British Museum, London. Bequeathed by César Mange de Hauke



Paul Gauguin, French, 1848–1903

Profile, c. 1902

Oil transfer drawing with watercolor additions

Sheet: 12 3/8 x 12 1/8" (31.4 x 30.8 cm)

Private Collection



Paul Gauguin, French, 1848–1903

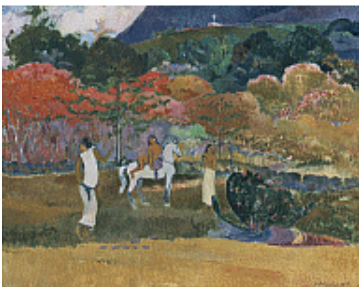
The Call, c. 1902–1903

Oil transfer drawing, squared in graphite

Sheet: 17 x 11 15/16" (43.2 x 30.4 cm)

Mount: 17 5/16 x 12 3/16" (44 x 31 cm)

Museum of Fine Arts, Boston. Otis Norcross Fund



Paul Gauguin, French, 1848–1903

Women and a White Horse, 1903

Oil on canvas

28 7/8 x 36 1/8" (73.3 x 91.7 cm)

Museum of Fine Arts, Boston. Bequest of John T. Spaulding

Gauguin: Metamorphoses



Paul Gauguin, French, 1848–1903

Noa Noa (Fragrant Scent), 1893-1901 (published 1926)

Facsimile edition of manuscript in pen and ink, illustrated with watercolors as well as cut-and-pasted watercolor monotypes, woodcuts, and photographs

12 1/2 x 9 5/8 x 1 3/16" (31.8 x 24.5 x 3 cm)

The Museum of Modern Art Library, New York